



FORWARD COLLEGE

Make your studies a journey

AWARDING BODY



UNIVERSITY
OF LONDON

ACADEMIC DIRECTION



THE LONDON SCHOOL
OF ECONOMICS AND
POLITICAL SCIENCE





JEFFREY SAMPSON, Founding Partner
Former Head of People Development, Apple

“Forward College is the future of education. It nurtures characters who will be able to navigate a highly uncertain future, make wise decisions, and lead change. Forward is really where career-building begins; it’s where people grow to become leaders in a new way that’s exciting and inspiring. I am just thrilled to be a part of it and I encourage students who wish to go beyond Academic Excellence to discover it.”

JEFFREY SAMPSON has been Global Head of People Development at Apple and Founding Member of Apple University, executing Steve Jobs’s vision to develop and prepare the next generation of leaders at Apple. He has also been Global Head of People and Leadership development at Christie’s.

Message from the Leadership Team



BORIS WALBAUM
Founder and CEO



PHILIP ALLMENDINGER
Chief Academic Officer



CÉLINE BOISSON
Founding Partner and Head of Marketing and Operations



JEFFREY SAMPSON
Founding Partner and Chief Talent Officer

The unprecedented nature of our future global challenges require a new way of learning. 75% of recruiters think universities do not prepare students adequately for the world of work¹. Academic performance is not enough in a fast-evolving and uncertain world. The future belongs to those who will reach beyond academic excellence and leverage all forms of human intelligences:

Cognitive intelligence for rigorous critical thinking, creative problem-solving, and constant intellectual flexibility;

Social intelligence to engage people across areas of expertise, cultures, and organisations;

Emotional intelligence to keep one’s balance, be mindful of others, and tap into the extraordinary potential of emotions for creativity and communication;

Practical intelligence to orchestrate effective project management, make wise decisions, deliver lasting change, and to understand and harness the extraordinary potential of technology;

Technological intelligence to understand and harness the extraordinary potential of technology.

Designed with the support of 60+ recruiters and experts from all over Europe, our groundbreaking International Bachelor’s programmes combine tradition with innovation to ensure both excellence and relevance for tomorrow.

ABOUT BORIS: After working in the French Government and McKinsey, Boris founded Article 1 - the #1 HE equal opportunities charity in Europe - and Dual, a leading consultancy providing strategic advice to universities.

ABOUT PHIL: Phil joined from the University of Bath, where he was the Deputy Vice Chancellor and, prior to that, Professor of Land Economy, Dean of Humanities and Social Sciences and a Deputy Vice Chancellor at the University of Cambridge, where he was also a Fellow of Clare College. Phil’s academic background is in urban policy and planning. He has published a number of books and papers on urban theory, political geography and, most recently, the impact of digital technology on cities. At Forward, he focuses on the delivery of our teaching, learning and research, working closely with fellows to support them and looking to the future growth and development.

ABOUT CÉLINE: Celine graduated from ESSEC MBA and Complutense University of Madrid. During her 15 years working in the tech industry for Google and YouTube, Celine has seen the extraordinary changes taking place in the world of work and felt an urgency to adapt higher education to these new challenges by equipping students with new skills and knowledge. Passionate about education, she designed, implemented, and scaled Google’s biggest training programme with one million university students and small businesses trained in digital skills in a two-year period. She also launched a global programme on YouTube to support students, parents, and teachers in continuing learning during Covid lockdown.

ABOUT JEFFREY: Founding Member of Apple University; involved in executing Steve Jobs’s vision to develop and prepare the next generation of leaders at Apple. He has also been Global Head of People and Leadership Development at Christie’s and Uniqlo.

[1] Education to employment: Designing a system that works, by McKinsey Global Institute, 2013

Overview of Undergraduate Programmes

Combining tradition for excellence with innovation for relevance

Forward College offers a holistic learning experience combining academic excellence with cutting-edge leadership development, digital training and intercultural exposure. Our undergraduate programmes aim to cover the whole spectrum of human intelligences.

As an official Recognised Teaching Centre of the University of London¹, Forward College offers six Bachelor's² degrees covering Economics, Business, Political Science, International Relations, Data Science, and Psychology.

These world-class degrees are boosted by our innovative approach to teaching and learning, 100% small-class teaching (15 students on average), and high quality faculty. (see page 20)

These core academic degrees are complemented by additional modules to develop other forms of human intelligences.

Bachelor's

Our Bachelor's programme (180 ECTS) includes limited leadership development modules in addition to the academic curriculum. Students will benefit from annual coaching sessions to help them assess their skills, prioritise their development and determine their future career, as well as an internship.

Bachelor's⁺

Our Bachelor's⁺ programme (220 ECTS) offers students a wide range of modules in addition to their academic Bachelor's. Students select one Entrepreneurship Certificate and three modules in Personal Development. Coaching and internship are also available as part of the degree.

Double Bachelor's

Our Double Bachelor's Programme (260 ECTS) offers students a full Bachelor's in Business & Leadership in conjunction with their academic Bachelor's. The Bachelor's in Business & Leadership includes three Entrepreneurship Certificates. Students will also have to complete the full Personal Development Programme. Coaching, internship, and consulting work are also available as part of the degree.

[1] The University of London is the parent institution of top London based universities such as **LSE, King's College London, and UCL**.

[2] Forward College offers a choice of five academic Bachelor's designed by the LSE (**Data Science, Economics, Economics & Politics, Politics & International Relations, Business & Management**) and one from King's College London (**Psychology**).

BACHELOR'S (180 ECTS)	BACHELOR'S ⁺ (220 ECTS)	DOUBLE BACHELOR'S (260 ECTS)
Academic Bachelor's by the LSE or King's College London	Academic Bachelor's by the LSE or King's College London	Academic Bachelor's by the LSE or King's College London
+	+	+
• Internship	Business & Leadership certificates	Bachelor's in Business & Leadership*
+	+	+
Language classes	• 1 Entrepreneurship project • Personal Development modules • Internship	• 3 Entrepreneurship projects • Full Personal Development programme • Internship • Consulting with startups, government, corporates or NGOs.
	+	+
	Language classes	Language classes

- Academic programme accredited by the University of London
- Business & Leadership programme accredited by Forward College

* This Bachelor's is awarded by Forward College. It is officially labelled as a Bachelor's in Social Sciences & Technology with a major in Business and Leadership

NB: Internship and language classes are not mandatory, but they are highly recommended for Bachelor's students.

The Community Expedition

3 years in 3 countries in dedicated Student Residences and Learning Centres

Forward College is an expedition into three European cities, where students will connect with different cultures and expand their horizons

- Year 1 in Lisbon.
- Year 2 in Paris.
- Year 3 in Berlin.

This expedition is the chance for them to step out of their comfort zone and engage with local communities. They will nurture their curiosity, enrich their understanding and build bridges across differences.

They will not only learn together in small class sizes but also work together on their projects in our Learning Centres.

Collaboration is an essential part of the process at Forward and so teamwork and sharing will be the default mode of working.

Forward students will live together in student residences where they'll meet new friends, share their passions, talents and causes, and where they will pursue joint initiatives.

Forward Residences are also safe spaces for students to share their concerns and express their feelings.



Our Learning Centres & Student Residences:

Lisbon

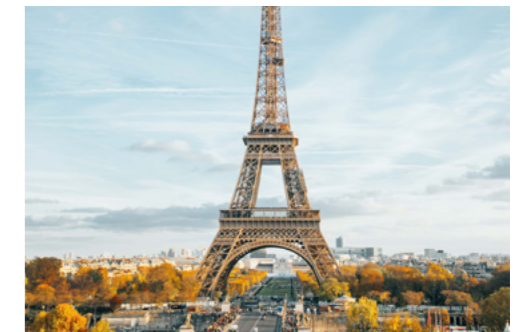
Our students spend their first year in Lisbon and the campus is divided across two spaces: the Lisbon Learning Centre, and the student residence. The Lisbon Learning Centre is situated in central Lisbon, close to Chiado metro station, and has several classrooms, a library which also doubles as a space for talks and presentations, study rooms, a meditation room, and an outdoor terrace for students to meet and socialise. Forward's Student Residence is in the Benfica area of the city, a 20min metro ride away from the Learning Centre. They have private rooms and bathrooms as well as access to communal kitchens, a shared lounge, library, media room, gym, and a private garden.



LISBON New capital of well-being and start-ups

Paris

Our students spend their second year in Paris, where they both live and study at the Cité Internationale Universitaire located in the 14th Arrondissement in the south of the city. At Cité internationale, the teaching & learning spaces are located in La Maison Internationale. Students have access to study rooms, a library, several restaurants with different specialties at affordable prices and a theater. Students live in Maison du Cambodge and in the Residence Andre Honnorat, which will give them access to individual rooms, shared or private bathrooms, shared kitchen, a media room, a lovely veranda, a foyer (including a bar, foosball, pool table & a piano), and a TV room.



PARIS Economic centre of the EU

Berlin

Our students spend their third and final year in Berlin. Our Learning Centre is located in the popular district of Kreuzberg, at The Factory Görlitzer Park. Students will have access to a library, a restaurant, study rooms, and a community of startups, corporations and other university students. Forward Students live in Spreepolis, a residence for international students located in the Schöneweide district, a former important industrial area on the bank of the river Spree. Spreepolis is a 25-minute bike ride from the Factory and 40 minutes by public transport.



BERLIN EU's most-populous city



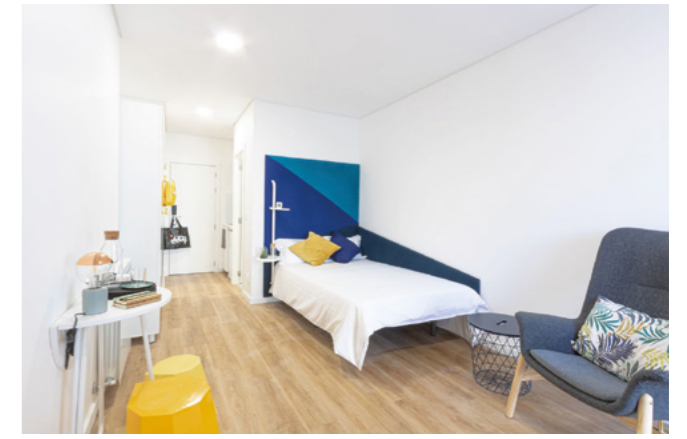
1. Lisbon - View from the Learning Centre



2. Lisbon Learning Centre in the Chiado area



7. Lisbon Student Residence at Xior Benfica



3. Paris Learning Centre at the Cité Internationale Universitaire



4. Cité Internationale Universitaire - Library



8. Paris Student Residence at the Cité Internationale Universitaire



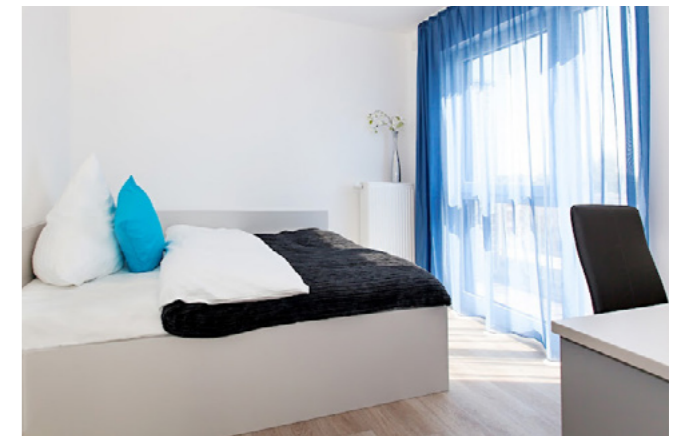
5. Berlin Learning Centre at The Factory



6. The Factory - Library



9. Berlin Student Residence at Spreepolis



Academic Bachelor's

Top Academic Bachelor's with cutting-edge teaching

Forward College is an officially recognised Teaching Centre of the University of London, which incorporates institutions such as King's College London, LSE, UCL and other London-based universities. This means that all our academic Bachelor's are:

- Designed by one of the member institutions of the University of London - in our case the LSE and King's College London
- Taught on our campuses in Lisbon (Year 1), Paris (Year 2), and Berlin (Year 3) by our world-class faculty
- Accredited and awarded by the University of London who organise the exams locally.

Forward College provides one of the highest student-to-faculty ratios. Our bespoke teaching is boosted by an innovative approach in order to develop not only performance but also learning agility, which is becoming the #1 skill in the eyes of recruiters. Our approach includes:

- 100% small group teaching (15 students on average)
- Weekly one-on-one tutoring sessions to discuss priorities and effective learning strategies
- Foundational seminars where students will test and adopt the most relevant learning methods for them
- Flipped classroom where students gradually acquire increased agency and initiative, share difficulties with their learning peers, self-assess their progress, and attend seminars to take learning one step further



MARCO NIEVERGELT, PHD
Academic Programmes
Coordinator

After receiving his PhD from Oxford University in 2009, Marco Nievergelt has taught and held fellowships at the Universities of Geneva, Lausanne, Warwick, Oxford, and the Paris Institute for Advanced Studies (2007-19). He was previously a Director of Studies at the Centre for the Study of the Renaissance of Warwick. He is specialist in European Comparative Literature, with a particular interest in cultural history, interdisciplinarity, and multilingualism. As an accomplished European citizen, Marco is fluent in four languages. He is also passionate about jazz, food, and design.

Six World-Class Bachelors



Highly relevant for the future of work

BSc in Business and Management Academic Direction: LSE

This degree helps you develop critical skills for a wide range of real-world professional situations. The programme will give you a thorough grounding in the principles of business and management.

BSc in Economics and Politics Academic Direction: LSE

This interdisciplinary degree allows students to apply economic reasoning to the analysis of a wide range of policy issues and gain a detailed and critical understanding of the main theoretical debates in the field of economics and politics.

BSc in Psychology Academic Direction: King's College London

This degree will provide you with a contemporary approach to the study of the human mind. You will learn to apply psychological science to a variety of contemporary and social challenges. There is an emphasis on quantitative and qualitative research methods.

BSc in Economics Academic Direction: LSE

This degree considers real-world issues such as climate change or rising inequalities on which students take an open-minded and scientific approach using formal modelling of economic relationships, and testing hypotheses against data.

BSc in Politics and International Relations Academic Direction: LSE

This degree helps you understand key issues faced by the international community. You will gain knowledge and understanding of how political power is distributed and organised within the state and between states.

BSc in Data Science and Business Analytics Academic Direction: LSE

Data science has become a core skill in business and government and meets a rapidly growing demand. In this programme you will leverage mathematics and statistics to analyse data, draw interpretations, and make actionable recommendations.

Entrepreneurship Projects

Real-life projects
Positive impact
Digital skills

Personal growth, business acumen, and leadership develop mainly through guided practice and reflection, not lectures. That is why Forward College offers a range of additional Higher Education Certificates that supplement the academic training of our students. Bachelor's+ students select one certificate among the first three and attend the Bootcamp. Double Bachelor's students need to complete three entrepreneurship certificates and the Bootcamp to validate their Bachelor's in Business and Leadership. These modules have all been carefully designed with the support of 60+ top recruiters, entrepreneurs, and experts.

Forward College offers four Higher Education Certificates:

Certificate 1: Social Impact and Sustainability

Everything starts with an idea: reduce plastic consumption, promote climate-friendly behaviour, support people with disabilities, promote access to arts...

Students will team up based on shared ideals and aspirations. Our faculty will take them through a step-by-step approach (design thinking) to help them deliver impact. Along the way, they will gain strong project management skills and acquire a set of core business techniques.

Certificate 2: Digital Innovation

This certificate is designed for students who wish to venture into creating a digital solution from scratch to explore a social or business opportunity they have identified. Students will team up and be guided through a step-by-step approach (agile methodology) towards impact.

Certificate 3: Research

Research is entrepreneurial as it requires courage, creativity, and rigor at the same time. You will work in a team in close collaboration with one of our Forward academic Fellows.

Certificate 4: Consulting with International Partner Organisations

Students will work as a consulting team to solve problems submitted by international organisations (NGO, corporate, start-up or intergovernmental organisation), partners of Forward College. Assignments will range from benchmarking, to exploring potential for a new product, communication strategy, co-design of a new solution or campaign...

They will work with professionals and leverage their project management skills, business techniques and digital experience. Our faculty will guide them through consulting methods and techniques to deliver impact for the partner organisation.

Skills development

While undertaking the certificates, you will gain strong project management skills and acquire a set of core business techniques essential to your future career:

SUSTAINABILITY AND SOCIAL IMPACT ENTREPRENEURSHIP	DIGITAL ENTREPRENEURSHIP	CONSULTING PROJECTS WITH EXTERNAL ORGANISATIONS
Observation & Data Analysis		
Literature review Interviewing Surveying (Qual & Quant)	Benchmarking Stats & Big Data I	Stats & Big Data II
Marketing		
Market Analysis & Targeting Benchmarking	Strategic Positioning Digital Marketing	Multichannel Marketing
Finance & Controlling		
Budgeting Controlling & Performance Mgt	Business Planning Controlling & Performance Mgt	Financial Analysis Controlling & Performance Mgt
Teamwork & Project Mgt		
Group Dynamics Teamwork Project Management	Project Management (Agile Methodology)	Project Management Change
Negotiation & Influence		
Active Listening Co-Design	Digital Influence Negotiation	Stakeholder Analysis Negotiation
Communication & Networking		
Communication strategy Oral Presentation	Digital Communication	Communication Strategy Influence
Strategy & Decision making		
Problem-Solving Opportunity Screening Scope & Goal-Setting	Problem-Solving Scenario Planning	Problem-Solving Risk Analysis and Management

Personal Development Certificates

Social Intelligence Emotional Intelligence

How to manage your stress or anxiety? How to decipher your emotions? How to connect with people and build trustful relationships? How to make wise decisions? How to engage others? How to cope with frustration and bounce back from failure?

All these challenges lie on the road to well-being, self-efficacy and positive leadership. Although the answers are personal, students can deepen their understanding, set their objectives and gradually develop the skills that will help them navigate these situations and grow their personality.

Bachelor's+ students select three modules from the nine available modules (see the diagram on the right). Double Bachelor's students need to complete the full personal development programme to validate their Bachelor's in Business and Leadership.

How we teach:

- Define your objectives for the module
- Engage in discussions and practical activities during the weekly workshop in small groups
- Train with your peers during the week thanks to beneficial habits and practices
- Debrief on your progress and next steps during the final session

These modules cover:

- Social skills: communication, feedback, building trust...
- Emotional skills: personal preferences, emotion management, resilience...



Your 360 Assessment and personal coaching

Once a year, students participate in a 360 assessment that allows them to gain valuable insight from various people in their network including peers, teachers, friends, and colleagues. This assessment generates a 360 report allowing them to identify strengths and areas for development, facilitating the creation of an Individual Development Plan.

During two one-on-one sessions of 45mins each, your coach will assist you in interpreting the 360 assessment results and offer guidance on your development plan: what skills would you like to focus on? How can you develop these skills? These coaching sessions are held annually:

Year One: Students and coaches focus on identifying strengths and areas for development from the initial 360 assessment laying the foundation for growth and skill enhancement.

Year Two: Students will undergo a second 360 Assessment to track skill improvement and shifting their focus towards honing skills that support their degree and career ambitions.

Year Three: A third 360 Assessment will help the students and coaches identify the skills necessary to prepare for their transition to their next challenge post-graduation.

YEAR 1	YEAR 2	YEAR 3
Stress Management, energy efficiency	Self-Discovery	Career Readiness (academic or professional)
Cooperation & Working in Teams	Emotional Literacy	Thinking Strategically
Designing Your Life	Decision-Making	Pitching Yourself

Student Support and Well-Being

Co-living Personal tutoring Counselling

At Forward College, we understand student well-being to be a sustainable state characterised by predominantly positive feelings, attitudes and relationships, positive functioning and a high level of satisfaction with learning experiences. By positive functioning, we emphasise resilience as the ability to overcome and learn from one's challenges. Research shows that well-being is positively correlated with academic performances.

Studying at Forward College will be challenging: our students will be pushed out of their comfort zones on a number of occasions as they transition from high school to university and learn autonomy, away from family in a new country, immersed in a multicultural student body.

They will also be confronted with novel teaching approaches, potentially in a new language, and facing new types of collaboration such as working in teams or working on projects.

Challenges, and mistakes made tackling them, lead to teachable moments which further enhance students' long-term well-being.

Friendship and community life

The first pillar of well-being is to develop meaningful relationships with their peers. First year students start the year with a two-week induction where they work together in small groups to learn the basics of teamwork and how to share feedback and manage differences. They will also enjoy fun activities such as a cooking contest, a surfing session, yoga on the beach, and more.

Our small-group teaching and continuous teamwork also foster social connections. These relationships are deepened in our student homes where they cohabit. Here they'll meet new friends, share their passions and talents.

Through student clubs and associations, students also take initiative together. Be it cultural, political, sports, or something else (even just for fun), students are all expected to join a club in Year 1.

Personal tutoring and personal development

Each month, all students meet their personal tutor who is generally one of the teaching staff. This is the opportunity to check in on their performance but also on their morale, social integration, and development needs.

Bachelor's+ and Double Bachelor's students participate in our personal development programme. In Year 1, students learn how to improve their resilience: practical (time management), social (how to manage conflict) and emotional (stress management).

Every year (and twice in the first year), students get feedback from the teaching staff and fellow students on all their intelligences (academic, social, emotional, and practical). This 360° feedback is discussed during two individual coaching sessions. Strengths and development needs are discussed in a non-evaluative way to encourage our students to strategise and focus on one aspect of their skillset they'd like to improve.

Counselling

Short-term counselling is available during your first year at Forward College as you transition and adapt to the academic, personal and emotional challenges of entering university.

Students may seek Forward College counselling services for additional support to help them manage the following concerns:

- Exam stress
- Managing anxiety
- Addressing study blocks and persistent procrastination
- Other well-being and emotional concerns

Where students are in need of alternative forms of therapeutic care, longer-term support or treatment for diagnosed mental health issues, Forward College can signpost students to the relevant healthcare services in Lisbon.



A World Class Team to Support Your Success

Academic Excellence Business & Leadership Experience

With one permanent faculty member for every 15 students on average, Forward College is one of the very few institutions where academics actually know and care for their students.

Academic Heads



**SARA SANTOS, PhD Head of Teaching & Learning Enhancement
Head of Data Science and Business Analytics**

holds a PhD from the University of Manchester, is a fellow of the Higher Education Academy and has previously held positions at King's College London.



RYAN WOODGATE, PhD Head of Economics & Politics

holds a PhD from the Université Sorbonne Paris Nord and two master's degrees from the Berlin School of Economics & Law and another one jointly awarded by the University of Paris and Université Sorbonne Paris Nord.



RUAIRIDH BROWN, PhD Head of International Relations

holds a PhD from the University of St Andrews. He has previously held academic positions at the University of Nottingham.



GEMMA GORDON, PhD Head of Psychology

holds a PhD from King's College London where she started her teaching and research activities.



PAUL COWELL, PhD Head of Economics

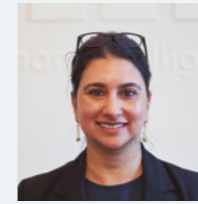
holds a PhD from the University of Stirling where he has previously held positions.



MARIANA TAVARES, PhD Head of Business and Management

holds a PhD from Maastricht University, where she has previously held positions.

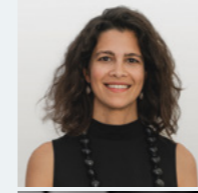
Business & Leadership Leads



NABILA ALIBHAI

Head of Personal Development

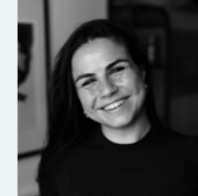
holds an MPH from Yale University. She has been a UN expert, research fellow at the MIT, an entrepreneur between the US and Africa, and is a TED Speaker.



ANA LUÍSA SILVA

Social Entrepreneurship Lead

is a PhD candidate at ISEG - University of Lisbon. Ana is both a researcher and practitioner with almost 15 years of professional experience in the field of international development cooperation, innovation and technology.



CHARLOTTE MARTINEZ

Digital Entrepreneurship Lead

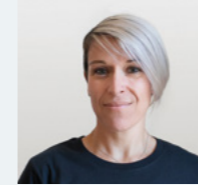
holds a master's degree in Management from UC Berkeley. She is a researcher in Regenerative Innovation and worked designing projects for leading corporations.



MELINA COSTA

Consulting Lead

holds a master's degree from Queen Mary University of London. She co-founded an agency that supports corporations in product development and mentors startups in acceleration programmes.



CÉLINE CHALARD

Student Career Development

after spending the majority of her teaching career working for French International Schools across the globe, she more recently coached and supported more than 200 students in making (sometimes life-changing) decisions in the Bachelor program of Ecole Polytechnique, one of the top scientific institutions in France.

An ecosystem to support your success after graduation

Most of our graduates apply to top Master's around the world either following the academic field they have invested in – with a natural path towards master programmes at LSE and King's College London – or by switching to top European business schools. Our highly personalised teaching will maximise your academic performance so that you achieve excellent grades on your Bachelor's degree.

Our career coaches and teaching fellows will be there to help you select and apply to top Master's courses, and after graduating, you will have a distinctive application that will set you apart, and help to open doors to your preferred university.

They will benefit from:

- personalised teaching designed to maximise individual academic performance so that each and every student reaches their academic best and achieves top marks for their Bachelor's degree, leading to successful applications to top Masters and to strong graduate employability;
- an undergraduate university experience which includes a demonstrable portfolio of completed real-life projects, an internship, international experience and multi-lingual exposure, as well as personal development and life-long self-awareness habits;
- career coaches and teaching fellows to support them to consider, select and apply to top Master's courses of their choice.

Meet some of our students

International Community Passionate and Engaged



After graduating from the Jeannine Manuel International School in France, Leo is now following our Double Bachelor's programme. Driven by the idea of helping others, he volunteered at Protection Civile as an EMT assistant and became first aid teacher. Leo also has a passion for sports - he was a member of his school basketball team which won the Parisian Cup. He also served as a referee at his school.



After completing her secondary education in Poland, Bogna is following our BSc in Psychology. She has led a social project that gave mentally disabled children the opportunity to express their dreams and encouraged them to talk about their ambitions. She is passionate about medicine, psychology and astronomy. She has also been involved in debating and public speaking.



After graduating in Italy, Jana is taking our BSc in Economics. Jana loves volunteering and has worked for Associazione Italiana Sclerosi Multipla (AISM), Association against Leukaemia, Lymphoma, and Myeloma (AIL), and is a ONE Youth Ambassador. She is also a trainer at Understanding Europe Network and organised the 48th National Selection Conference in 2021.



After David's high school experience in Bosnia-Herzegovina through United World College and having completed one year at a Canadian university, he came to Forward College because of its small-classroom and discussion-focused approach. For his Social Impact Project, as part of the bachelor in Business and Leadership, he aims to organise beach clean-ups in the Lisbon area to give back to the local community and take greater care of the environment. In his free time, David flies gliders and is involved in the fight of the climate crisis.

"I believe Forward College offers an outstanding opportunity, which I couldn't resist. I was looking for a school which provides me a well-recognized degree and also cares about my personal development. Being able to study in three different countries, learn the languages and meet their cultures is an exceptional offer. Doing it with an international community will allow us to gain a wider perspective and understanding on a variety of things. Forward College is very promising so I can't wait to move to Lisbon." Bogna

Key Figures



100% small group teaching in person on campus (~15 students)



100% of academic faculty with teaching experience in Russell Group Universities (or EU equivalent)



60 international recruiters and experts supporting Forward College (L'Oréal, Google, Capgemini, OECD...)



33 nationalities



18 applications per place



+88% growth in number of applications / year



98,8% pass rate in the LSE KCL exams

Tuition fees

The yearly tuition fees¹ amount to:

- **Bachelor's (180 ECTS):**
€18,500 for EU / EEA / Swiss students
(€22,500 for other international students)
- **Bachelor's⁺ (220 ECTS):**
€21,000 for EU / EEA / Swiss students
(€25,000 for other international students)
- **Double Bachelor's (260 ECTS):**
€25,000 for EU / EEA / Swiss students
(€29,000 for other international students)

There are no additional administrative fees.

Diversity and equal opportunity are core values at Forward College. By 2025, we pledge to offer financial support to enroll **30% of our new cohorts from disadvantaged backgrounds.**

In the meantime, scholarships and 0% interest trust loans are available for such students.

Cost of accomodation

Students will live in our dedicated Student Residences which are part of the Forward co-living and co-learning experience.

Here are indications on the approximate monthly rates of the rooms:

- Lisbon: €580 to €730 per month
- Paris: €760 to €930 per month
- Berlin: €540 to €670 per month

[1] This total amount is split between the University of London and Forward College. Please consult our website for up to date fees.

Our Committee of Senior Advisors

Capgemini, Hubert Giraud (Global Head of Human Resources & Transformation), **SAP**, Wolfgang Fassnacht (Global Head of Leadership & Talent Development), **L'Oréal**, Jean-Claude Legrand (Global Head of HR), **Heidrick & Struggles Consulting**, Hervé Borensztejn (Managing Director), **Salesforce**, Philippe van Caenegem (Global Managing Director of Innovation), HEC and Oxford, Prof. Olivier Sibony (former **McKinsey** Director), **Woodeum**, Guillaume Poitrinal (CEO), Cartier, Pascal Rousseau, (former Global Head of HR), **Tomtom**, Corinne Vigreux (Co-founder), **Leap Venture**, Hala Fadel (Managing Partner), **Arianespace**, Stéphane Israel (CEO), **OECD**, Stephan Vincent-Lancrin (Senior Expert in Education).



“Forward College combines what corporates are desperately looking for: a solid intellectual training with soft and digital skills”

JEAN-CLAUDE LEGRAND, Senior Advisor
L'Oreal - Global Head of Human resources



“Forward College is the most exciting programme in Higher Education I've come across.”

CHRIS COBB, Senior Advisor
University of London - former Vice Provost



“We need Forward College to bring about new talents who will be both more humane and able to leverage technology for good”

CORINNE VIGREUX, Senior Advisor
Co-Founder of Tomtom, Founder of CODAM Coding School



“Forward College is the kind of experience that gives students the ability to learn, practice, and reflect so that they become highly adaptable leaders.”

PHILIPPE VAN CAENEGEM, Senior Advisor
Salesforce - Managing Director of Innovation





**FORWARD
COLLEGE**

FORWARD

Email: admissions@forward-college.eu
Tel: +33.7.69.37.51.04

Forward College Lisbon: Rua das Flores 71, 1200-213 Lisboa, Portugal

Forward College Paris: Cité Internationale Universitaire,
La Maison Internationale, 17 Boulevard Jourdan 75014 Paris, France

Forward College Berlin: Köpenicker Str. 43, 10179 Berlin, Germany

AWARDING BODY



**UNIVERSITY
OF LONDON**

ACADEMIC DIRECTION



THE LONDON SCHOOL
OF ECONOMICS AND
POLITICAL SCIENCE ■